



Our History of Putting Students First

Walter Rasmussen founded Rasmussen College in 1900 with a vision to provide in-demand programs that deliver well-prepared graduates for the workforce. We continue that legacy more than 120 years later. Rasmussen University provides career-focused education to more than 17,000 students enrolled at 23 campuses in six states and online across the country. We primarily serve adult students who are returning to college – a population that has traditionally been underserved by U.S. higher education.

Accreditation

Rasmussen University is accredited by the Higher Learning Commission,¹ a regional accreditation agency recognized by the U.S. Department of Education. Regional accreditation is only awarded to colleges and universities that meet the criteria established by the accrediting commission in their respective regions. Accreditation provides assurance that a college or university has been found to meet rigorous program requirements and academic criteria. Programmatic accreditation varies by campus, and additional information can be found on our website.

Our Academic Programs

Rasmussen University offers on-campus and online options for Doctoral degrees, Master's degrees, Bachelor's degrees, Associate's degrees, Diplomas and Certificates in more than 50 career-enriching programs in seven areas of study:

- Nursing
- Health Sciences
- Business
- Technology
- Design
- Education
- Justice Studies

As an institution of higher learning, Rasmussen University is dedicated to the growth and development of our students, employees and the communities we serve. We offer programs focused on areas with the greatest career opportunities. Flexible learning options allow our students to earn credit by demonstrating what they already know, including credit for prior learning and competency-based education (CBE). As we prepare the next generation of experienced professionals to lead in their fields, we are proud to also offer the following graduate degrees: Master of Business Administration, Doctor of Nursing Practice, Master of Science in Nursing, Master of Human Resources Management, Master of Healthcare Administration and Master of Public Health.

RASMUSSEN UNIVERSITY Locations



**23 Campuses Across Six States
Serving 17,196 Students**



Florida - Fort Myers, Central Pasco, Ocala, Orlando and Tampa/Brandon

Illinois - Aurora/Naperville, Centro de Aprendizaje, Mokena/Tinley Park, Rockford and Romeoville/Joliet

Kansas - Kansas City/Overland Park and Topeka

Minnesota - Blaine, Bloomington, Brooklyn Park/Maple Grove, Eagan, Lake Elmo/Woodbury, Mankato, Moorhead and St. Cloud

North Dakota - Fargo

Wisconsin - Green Bay and Wausau

¹ Higher Learning Commission | hlcommission.org | 800-621-7440

Our Economic Impact

With more than 1,000 full-time faculty and staff, Rasmussen has established deep roots in the communities in which we operate. The annualized salary of our full-time staff, excluding benefits and bonuses, amounts to nearly \$76 million. State taxes paid during the 2018-2020 reporting period exceed \$856,000.¹

Employers & Graduates

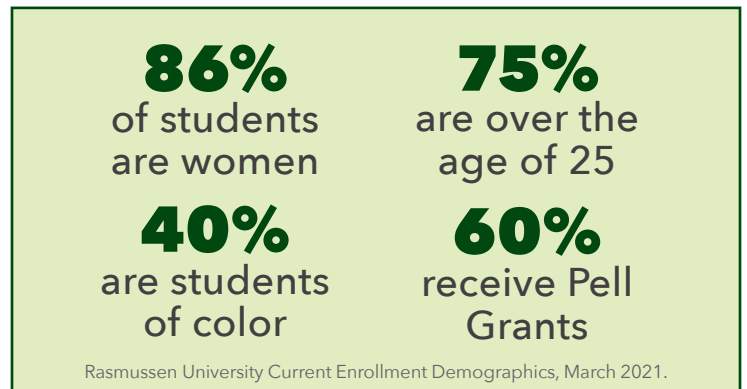
Rasmussen graduates land at some of the nation's top businesses, medical institutions and nonprofits. In Minnesota, for example, nobody hires more Rasmussen grads from our Gopher State physical campuses than the Mayo Clinic. Nationwide in 2020, recent Rasmussen graduates worked at nearly 7,500 distinct employers, and the University maintains formal alliances with more than 1,000 local and national companies and organizations.

Affordable

Many Rasmussen programs cost less than equivalent degrees at traditional two- and four-year colleges and universities. Graduate students, for instance, can earn a Master's degree (including an MBA) for less than \$10,000. And because Rasmussen focuses on providing training for in-demand jobs with family-sustaining wages, our graduates typically are able to manage their student debt better than at other career-focused institutions. The student loan default rate at Rasmussen University is lower than the national average.

Diverse from the Start

From its earliest days more than 120 years ago, Rasmussen has existed to serve students who can't access traditional colleges and universities. For a long time, that was women, especially, and students of color, who were eager to advance in the workplace but were shut out from mainstream institutions. Today, Rasmussen specializes in serving students whose lives can't accommodate a full-time, daytime, tightly scheduled, conventional undergraduate or graduate degree program—still largely women and many students of color.



Nearly all Rasmussen students are working adults balancing their studies with jobs, families and life. After one year at the University, 50% of students graduate or are still enrolled. Across all programs, 44.5% of enrolled students graduate within four years. On average, Rasmussen students receiving federal aid repay their loans at higher rates than college students overall.²

Rasmussen's Affordability Initiatives

2011

Reduced cost per credit of Bachelor's degree programs by 26% for full-time students.

2012 - 2013

Reduced tuition for full-time students by a national average of 12% across all programs, with a 24% reduction on select programs.

2014

Further reduced tuition for part-time students, by \$310 per credit. Introduced competency-based education (CBE) program options and allowed CBE assessments to be completed at no additional cost. (Currently \$99/attempt)

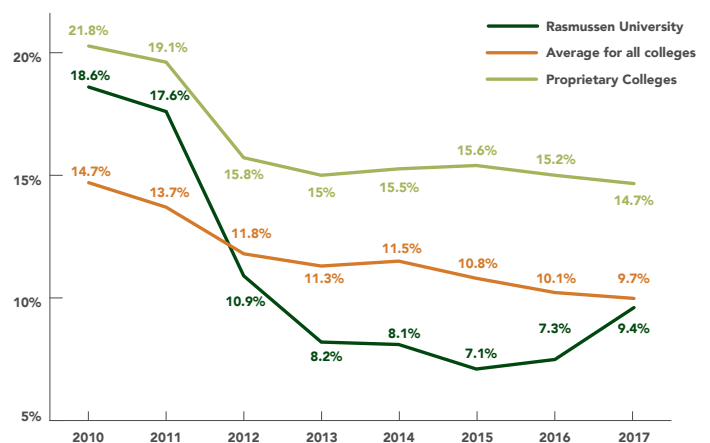
2015

Further reduced tuition across 18 programs and expanded CBE to nearly all programs.

2021

Priced Master's degrees at \$10,000.

Federal Student Loan Cohort Default Rate³



¹ Rasmussen internal tracking of annualized salaries and state taxes paid by calendar year, March 2021.

² Rasmussen internal tracking, March 2021. See www.rasmussen.edu/student-investment-disclosure for full details.

³ FY17 National Cohort Default Rates. Accessed April 2021.